



# FACT SHEET



Government of South Australia

Department for Infrastructure and Transport

## ROAD SAFETY IN THE ADELAIDE REGION

Publication date: December 2020

### A report of road crashes in the Adelaide Region 2015-2019

#### Road Trauma in South Australia

The annual number of lives lost on road and serious injuries is traditionally used as an indicator of road safety in South Australia. The South Australian Road Safety Strategy 2020 – *Towards Zero Together* has a target to reduce lives lost and serious injuries by at least 30% by 2020.

There were 114 lives lost recorded on South Australian roads in 2019. This is 34 more than the 80 lives lost recorded in 2018 and is 19 more than the previous 5 year average (2014 – 2018) of 95 lives lost.

Serious injuries have increased from 576 in 2018 to 833 in 2019, the highest recorded total of serious injuries in a given year. The number is also 24% higher than the previous 5 year average (2014 – 2018) of 672 serious injuries per year.

#### Road Trauma in the Adelaide Region

In the period 2015-2019, on average 33 people are killed and 344 are seriously injured on roads in the Adelaide region. Residents of the region represent 70% of the total population of South Australia and account for 35% of fatalities in South Australia and 49% of all serious injuries.

Figure 1.1– Number of casualty crashes, 2015-2019

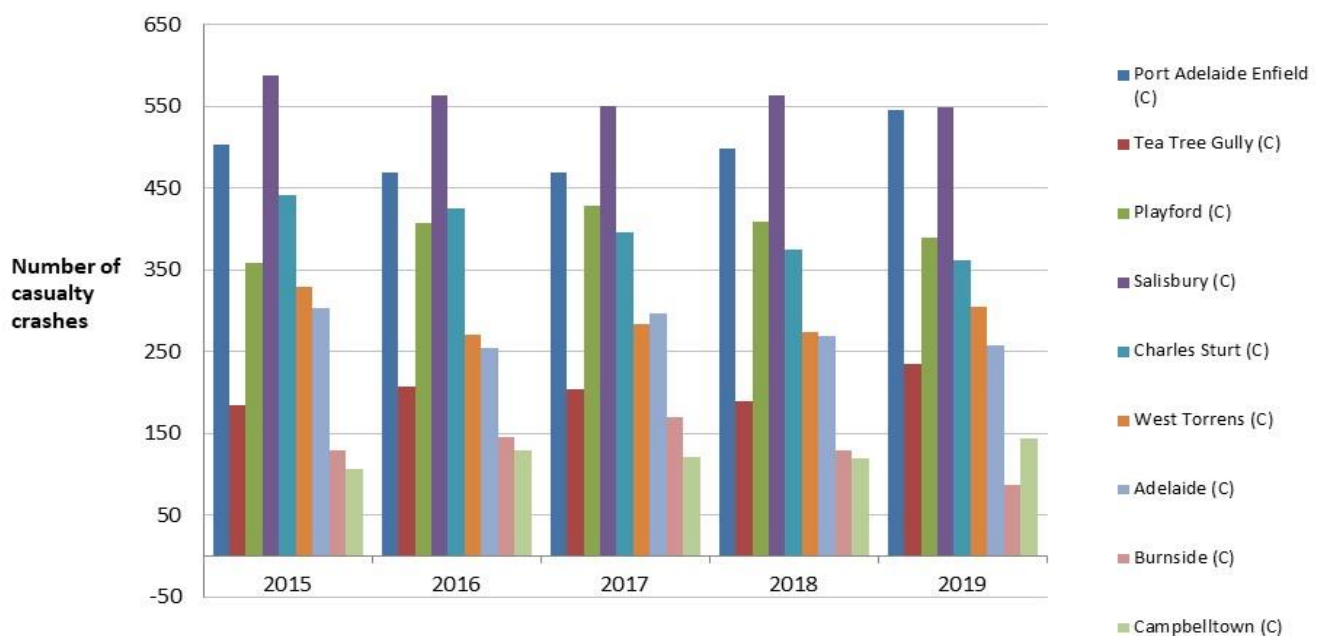


Figure 1.2– Number of casualty crashes, 2015-2019

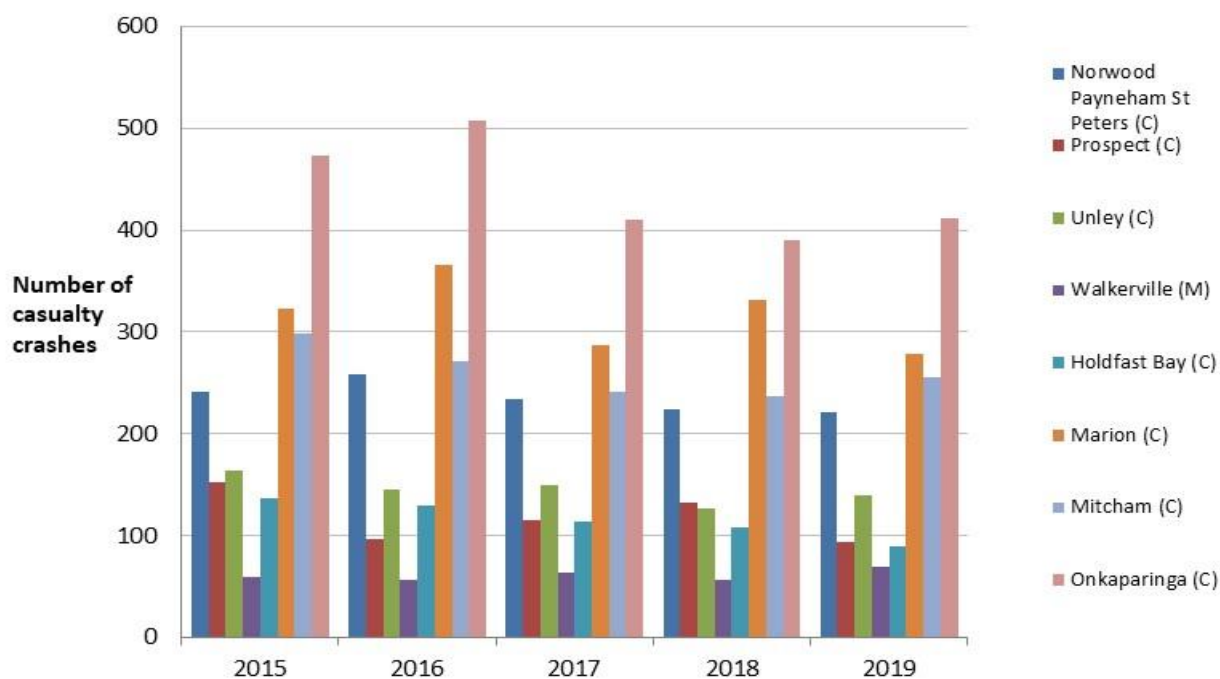


Table 1 shows the number and percentage of casualty crashes in 2015- 2019 by council.

**Table 1 –Casualty crashes, Adelaide Councils, South Australia, 2015-2019**

Local Government Areas	Fatal Crashes (%) <sup>1</sup>	Serious crashes (%) <sup>1</sup>	Minor crashes (%) <sup>1</sup>	Total
Port Adelaide Enfield (C)	12 (7%)	188 (11%)	2,288 (11%)	2,488 (11%)
Tea Tree Gully (C)	12 (7%)	70 (4%)	940 (4%)	1,022 (4%)
Playford (C)	26 (16%)	168 (10%)	1,800 (9%)	1,994 (9%)
Salisbury (C)	24 (14%)	164 (10%)	2,626 (12%)	2,814 (12%)
Charles Sturt (C)	15 (9%)	155 (9%)	1,832 (9%)	2,002 (9%)
West Torrens (C)	10 (6%)	110 (6%)	1,344 (6%)	1,464 (6%)
Adelaide (C)	7 (4%)	117 (7%)	1,262 (6%)	1,386 (6%)
Burnside (C)	6 (4%)	40 (2%)	617 (3%)	663 (3%)
Campbelltown (C)	1 (1%)	49 (3%)	571 (3%)	621 (3%)
Norwood Payneham St Peters (C)	4 (2%)	62 (4%)	1,113 (5%)	1,179 (5%)
Prospect (C)	4 (2%)	20 (1%)	567 (3%)	591 (3%)
Unley (C)	3 (2%)	38 (2%)	686 (3%)	727 (3%)
Walkerville (M)	0 (0%)	20 (1%)	286 (1%)	306 (1%)
Holdfast Bay (C)	3 (2%)	51 (3%)	523 (2%)	577 (3%)
Marion (C)	10 (6%)	119 (7%)	1,460 (7%)	1,589 (7%)
Mitcham (C)	6 (4%)	102 (6%)	1,194 (6%)	1,302 (6%)
Onkaparinga (C)	24 (14%)	245 (14%)	1,924 (9%)	2,193 (10%)
<b>TOTAL</b>	<b>167</b>	<b>1,718</b>	<b>21,033</b>	<b>22,918</b>

There was a total of 22,918 casualty crashes recorded in the Adelaide Region in the 5 years 2015 – 2019.

<sup>1</sup> Percentages are rounded and made up to a total of 100%

Table 2 shows the contribution of each council to the overall number of casualty crashes by year in the Adelaide Region for the last 5 years.

**Table 2 – Number of casualty crashes, 2015-2019**

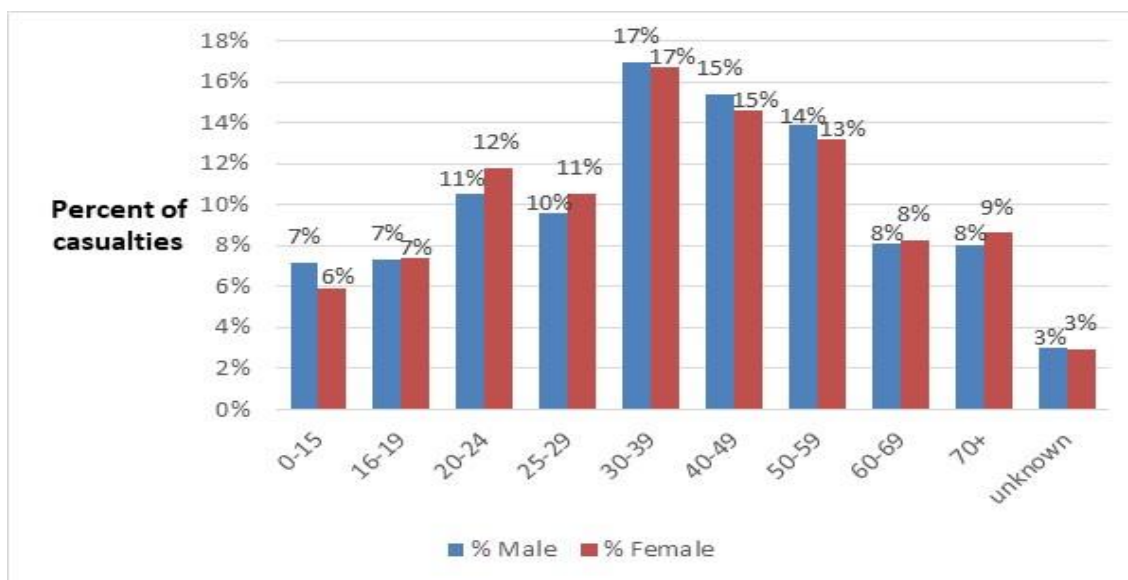
Local Government Areas	2015	2016	2017	2018	2019	Total
Port Adelaide Enfield (C)	416	390	393	436	442	<b>2,079 (11%)</b>
Tea Tree Gully (C)	159	167	170	161	181	<b>838 (4%)</b>
Playford (C)	277	315	298	300	290	<b>1,480 (8%)</b>
Salisbury (C)	472	433	426	450	429	<b>2,210 (12%)</b>
Charles Sturt (C)	371	363	343	321	303	<b>1,702 (9%)</b>
West Torrens (C)	281	237	244	227	251	<b>1,240 (7%)</b>
Adelaide (C)	275	229	265	226	233	<b>1,230 (7%)</b>
Burnside (C)	113	121	149	109	79	<b>571 (3%)</b>
Campbelltown (C)	91	114	98	104	118	<b>525 (3%)</b>
Norwood Payneham St Peters (C)	212	222	212	192	187	<b>1,025 (5%)</b>
Prospect (C)	122	88	101	110	80	<b>501 (3%)</b>
Unley (C)	149	124	121	110	115	<b>621 (3%)</b>
Walkerville (M)	48	47	54	48	59	<b>256 (1%)</b>
Holdfast Bay (C)	124	113	95	96	81	<b>510 (3%)</b>
Marion (C)	258	291	228	278	220	<b>1,277 (7%)</b>
Mitcham (C)	253	238	203	204	210	<b>1,108 (6%)</b>
Onkaparinga (C)	352	395	331	310	323	<b>1,712 (9%)</b>
<b>TOTAL</b>	<b>3,973</b>	<b>3,887</b>	<b>3,731</b>	<b>3,682</b>	<b>3,601</b>	<b>18,885</b>

Table 3 shows the contribution of each council to the overall number of casualties as opposed to crashes in the Adelaide Region. There were 22,918 casualties as a result of the 18,885 crashes in the Adelaide Region.

**Table 3 - Number of casualties (lives lost, serious and minor injuries), 2015-2019**

Local Government Areas	2015	2016	2017	2018	2019	Total
Port Adelaide Enfield (C)	503	470	469	498	546	<b>2,488 (11%)</b>
Tea Tree Gully (C)	185	207	204	190	236	<b>1,022 (4%)</b>
Playford (C)	359	408	428	410	389	<b>1,994 (9%)</b>
Salisbury (C)	588	564	550	563	549	<b>2,814 (12%)</b>
Charles Sturt (C)	442	426	396	375	362	<b>2,002 (9%)</b>
West Torrens (C)	329	271	284	275	305	<b>1,464 (6%)</b>
Adelaide (C)	304	255	297	270	258	<b>1,386 (6%)</b>
Burnside (C)	130	146	170	129	88	<b>663 (3%)</b>
Campbelltown (C)	107	129	122	119	144	<b>621 (3%)</b>
Norwood Payneham St Peters (C)	241	259	234	224	221	<b>1,179 (5%)</b>
Prospect (C)	153	96	115	133	94	<b>591 (3%)</b>
Unley (C)	164	145	150	126	139	<b>727 (3%)</b>
Walkerville (M)	59	57	64	56	70	<b>306 (1%)</b>
Holdfast Bay (C)	136	129	114	108	89	<b>577 (3%)</b>
Marion (C)	323	366	287	332	279	<b>1,589 (7%)</b>
Mitcham (C)	298	271	241	237	255	<b>1,302 (6%)</b>
Onkaparinga (C)	473	508	410	390	411	<b>2,193 (10%)</b>
<b>TOTAL</b>	<b>4,794</b>	<b>4,707</b>	<b>4,535</b>	<b>4,435</b>	<b>4,435</b>	<b>22,918</b>

**Figure 3 – Percentage of casualties by age and gender, 2015-2019**



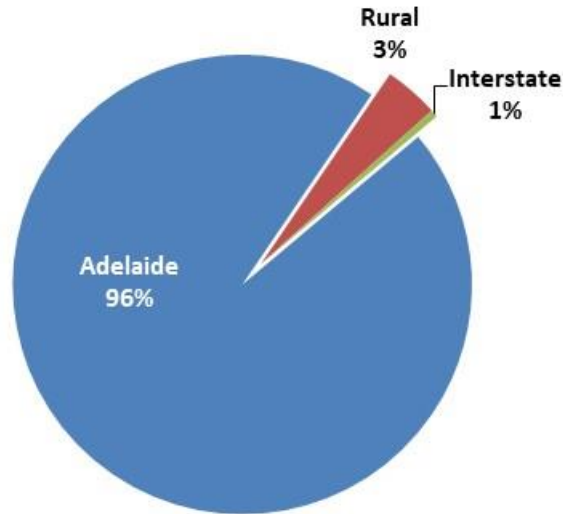
- There were a total of 22,918 casualties for the 5 year period 2015-2019.
- 48% were male and 52% were female.
- Casualty numbers were high in the younger age groups, 16-24 years representing the highest numbers.
- 19% of road user casualties in this region are 16-24 year olds.
- People aged 16 to 24 year old in this region make up 11% of the population, but accounted for 19% of all lives lost and 18% of all serious injuries for the years 2015-2019.

**Table 4 – Casualties by age and type of casualty, 2015-2019**

Road User	0-15	16-19	20-24	25-29	30-39	40-49	50-59	60-69	70+	Unknown	Total
<b>Driver</b>	6	895	1589	1482	2668	2269	1958	1203	1226	183	13479
<b>Passenger</b>	1161	386	378	296	367	293	315	244	379	394	4213
<b>Motor cyclist (including pillion)</b>	6	198	304	223	286	246	271	115	20	22	1691
<b>Cyclist</b>	147	112	183	202	379	491	416	179	81	71	2261
<b>Pedestrian</b>	171	97	109	103	145	131	129	141	198	49	1273
<b>Total</b>	<b>1491</b>	<b>1688</b>	<b>2563</b>	<b>2306</b>	<b>3845</b>	<b>3430</b>	<b>3089</b>	<b>1882</b>	<b>1904</b>	<b>719</b>	<b>22,918</b>

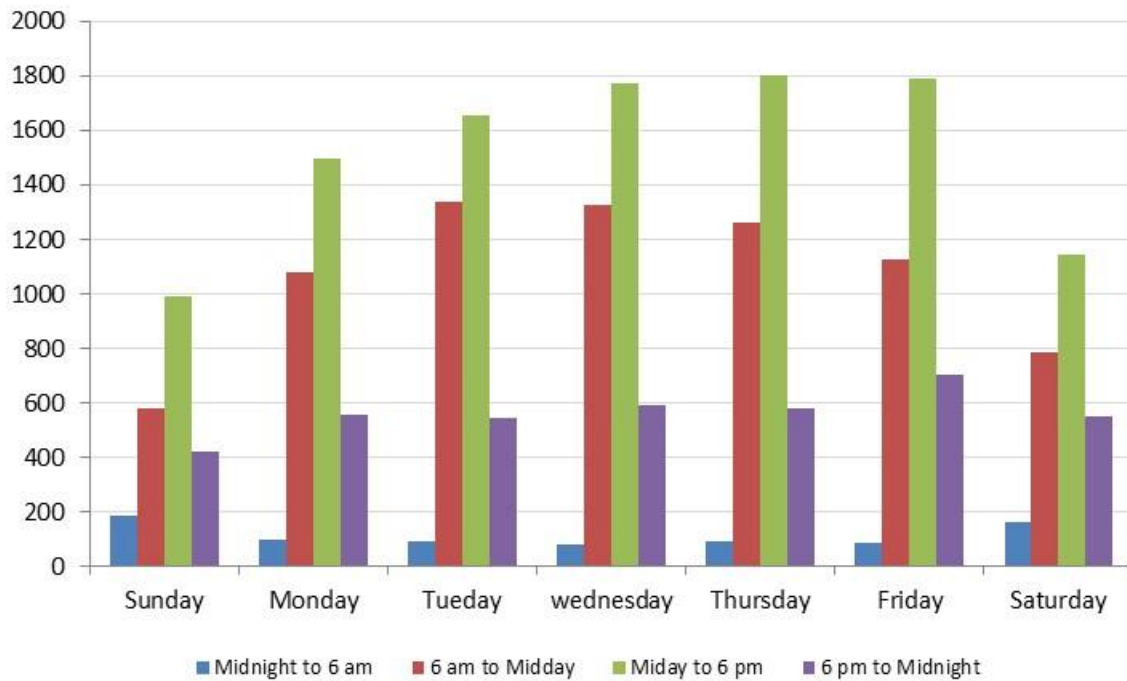
- Like most areas, drivers and passengers (vehicle occupants) make up the majority of road user casualties in the Adelaide Region.
- 293 (2%) of the vehicle occupant casualties were not wearing a seatbelt at the time of the crash.

**Figure 4 – Residence of driver and rider casualties, 2015-2019**



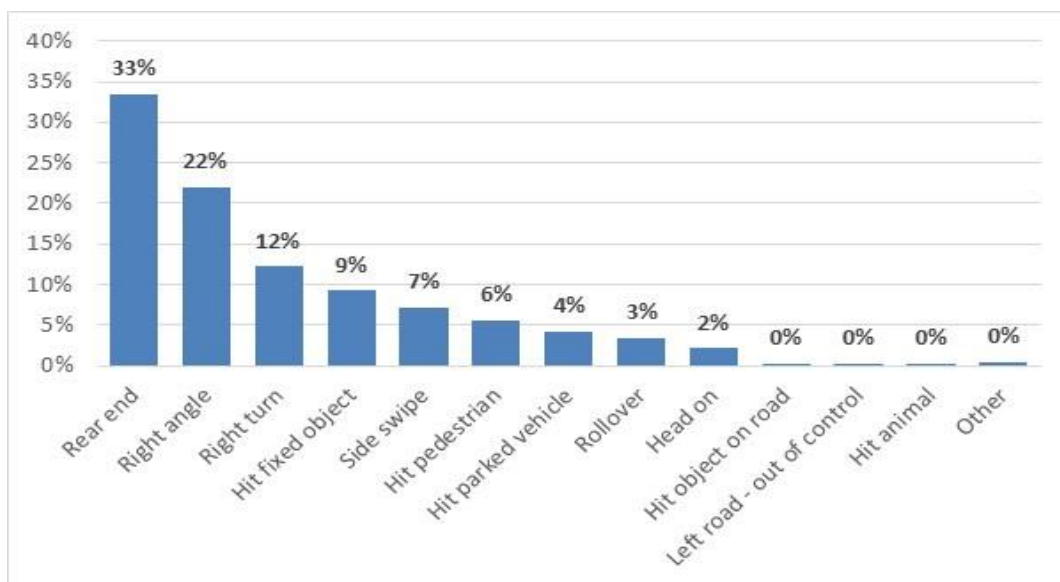
- 96% of driver and rider casualties that occur in the Adelaide Region are residents of the region.
- 3% are from rural areas in South Australia.
- 1% are from interstate.

**Figure 5 – Casualty crashes by time of day/day of week, 2015-2019**



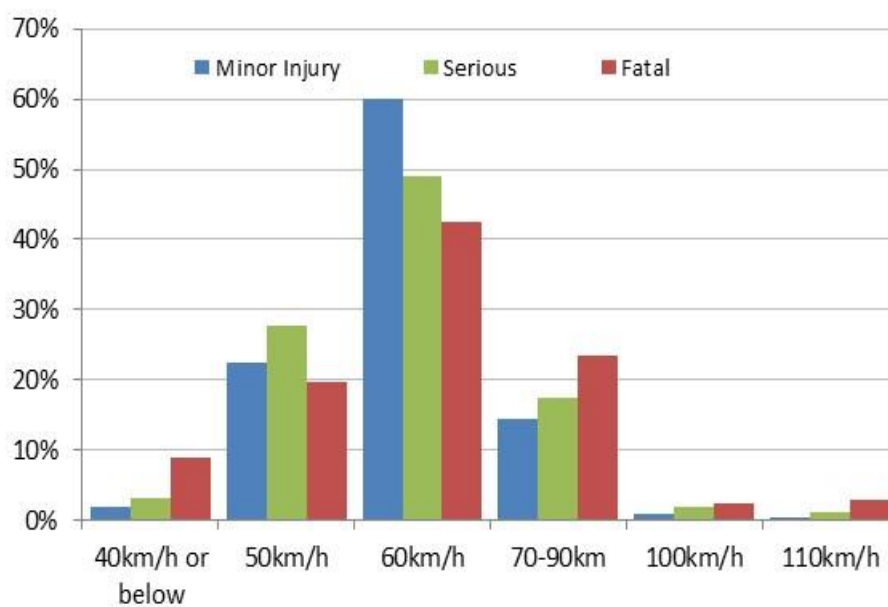
- While crashes can occur at any time, the most common time for a casualty crash to occur in the Adelaide Region is midday to 6 pm.

**Figure 6 – Casualty crashes by crash type, 2015-2019**



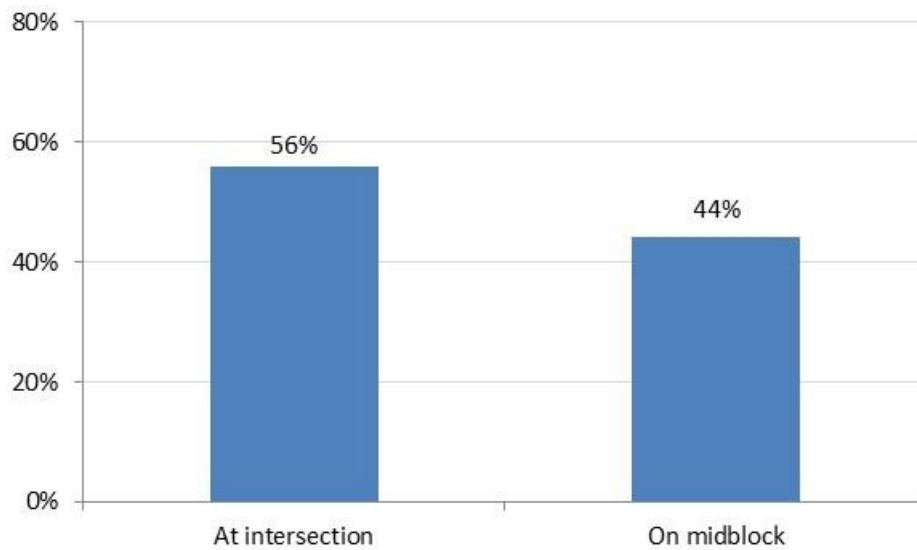
- The majority of casualty crashes are the result of a rear end.

**Figure 7 – Casualty crashes by speed limit of road, 2015-2019**



- 60% of all casualty crashes in the Adelaide region occur on roads posted at 60 km/h while 22% occurred in a 50 km/h zone.
- 43% of the fatal crashes occurred on roads posted at 60 km/h followed by 20% occurred in a 50 km/h zone.

**Figure 8 – Where the casualty crashes occurred within the Adelaide Region, 2015-2019**



- 56% of all casualty crashes in the Adelaide Region occur at intersections, while the remaining 44% occur at 'midblock' sections where there are no intersecting roads.

**Definitions for crash and casualty types:**

**Casualty Crash** - A crash where at least one fatality, serious injury or minor injury occurs.

**Casualty** – A fatality, serious injury or minor injury.

**Fatal Crash** - A crash for which there is at least one fatality.

**Fatality** - A person who dies within 30 days of a crash as a result of injuries sustained in that crash.

**Serious Injury Crash** - A non-fatal crash in which at least one person is seriously injured.

**Serious Injury** - A person who sustains injuries and is admitted to hospital for a duration of at least 24 hours as a result of a road crash and who does not die as a result of those injuries within 30 days of the crash.

**Minor Injury Crash** - A crash for at least one person sustains injury but no person is admitted to hospital or dies within 30 days of the crash.

**Minor Injury** – A person who sustains injuries requiring medical treatment, either by a doctor or in a hospital, as a result of a road crash and who does not die as a result of those injuries with 30 days of the crash.